
LAND STEWARDSHIP

— A COLLABORATION STRATEGY FOR —
RESILIENCE



FUNDACIÓ EMYS

What is Fundació Emys?

- ▶ Non-lucrative environmental organisation
- ▶ Created in 1987 as an association, by volunteers
- ▶ In 2003 we became a Foundation, professionalisation
- ▶ Today one of the largest environmental organisations in Catalunya

What does Fundació Emys do?

- ▶ Preservation of the natural heritage through conservation actions
- ▶ Environmental education of all ages
- ▶ Guidance in sustainable management of forests and farmlands
- ▶ Generation of green economy through the sale of biodiversity-friendly products
- ▶ Social awareness of the best practices while visiting nature

Espai en custòdia

1

CAMÍ PRIVAT A CAN PASTELLS
PROHIBIT EL PAS A PERSONES HO AUTORITADES

Aquest camí és propietat de l'Entitat Gestora i està destinat a l'ús exclusiu dels propietaris dels terrenys que s'indiquen a continuació. No està autoritzat el pas de persones ni d'autoritats.

Entitat Gestora: Consorci de Gestió del Parc Natural de Collsero

Propietaris: [Nom del propietari]

Adreça: [Adreça del propietari]

Localitat: [Localitat del propietari]

Protecció: [Protecció del camí]

Observacions: [Observacions sobre el camí]

Mapa: [Mapa del camí]

Coordenades: [Coordenades del camí]

Altitud: [Altitud del camí]

Tipus de camí: [Tipus de camí]

Observacions: [Observacions sobre el camí]

Mapa: [Mapa del camí]

Coordenades: [Coordenades del camí]

Altitud: [Altitud del camí]

Tipus de camí: [Tipus de camí]

Observacions: [Observacions sobre el camí]

Mapa: [Mapa del camí]

Coordenades: [Coordenades del camí]

Altitud: [Altitud del camí]

Tipus de camí: [Tipus de camí]

Observacions: [Observacions sobre el camí]

Mapa: [Mapa del camí]

Coordenades: [Coordenades del camí]

Altitud: [Altitud del camí]

Tipus de camí: [Tipus de camí]

Observacions: [Observacions sobre el camí]

Mapa: [Mapa del camí]

Coordenades: [Coordenades del camí]



LAND STEWARDSHIP

Stewardship in Catalonia

74

Land stewardship organizations

Public (26) & private (48)

Land Stewardship initiatives

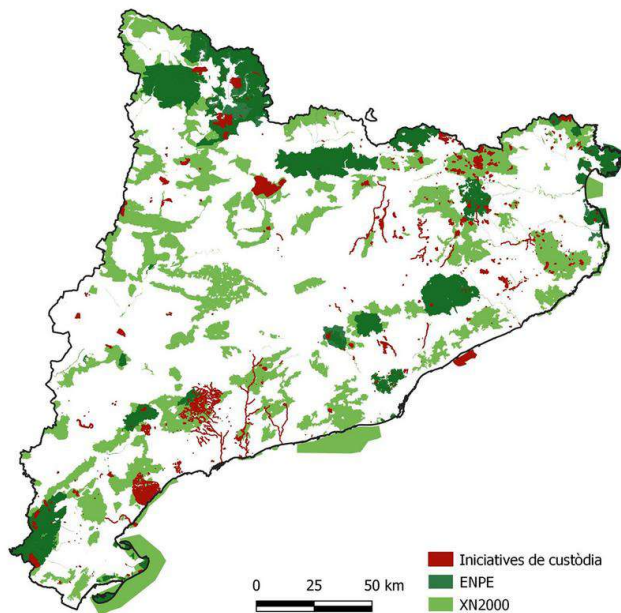
In forest, agricultural, rivers, sea and urban areas (41.744 ha of land)

796

130

Agrarian land stewardship initiatives

10.5% of the area under land stewardship



Duration of contracts/agreements

1 year

99 years

10 years*

Surface area of the initiatives

0,005 ha

6.097 ha

5,3 ha*

Nº of initiatives per entity

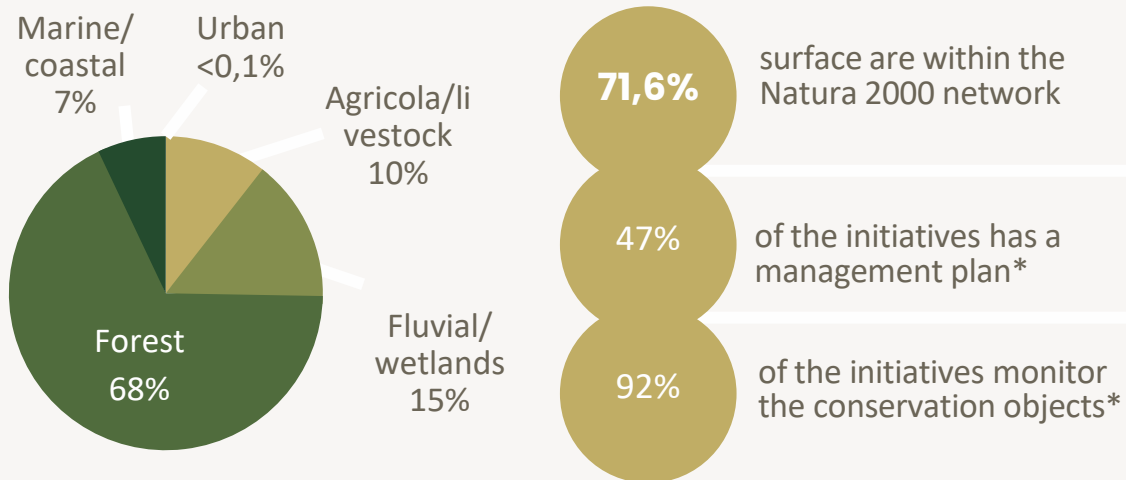
1 initiative

98 initiatives

3 initiatives*

Stewardship in Catalonia

Surface per area of stewardship



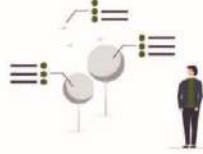
*Out of the total number of initiatives for which we have a response



METHODOLOGY



1 Detection of natural areas of priority interest



2 Characterisation of its state of conservation, pressures and context



3 Analysis of strategic actors for carrying out specific conservation actions



4 Identifying valuable ecosystem services for the primary sector



5 Dialogue with the involved actors to reach a consensus on the process



6 Creation of partnerships through stewardship agreements



7 Implementation of specific conservation actions



8 Communication and awareness of the actions and their results

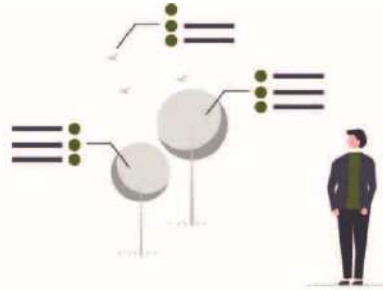


9 Regular monitoring of the actions, maintenance and review of its effectiveness

- 1. ANALYSIS**
- 2. PARTNERSHIPS**
- 3. ACTION**
- 4. AWARENESS**
- 5. MONITORING**



1 Detection of natural areas of priority interest



2 Characterisation of its state of conservation, pressures and context



3 Analysis of strategic actors for carrying out specific conservation actions



4 Identifying valuable ecosystem services for the primary sector



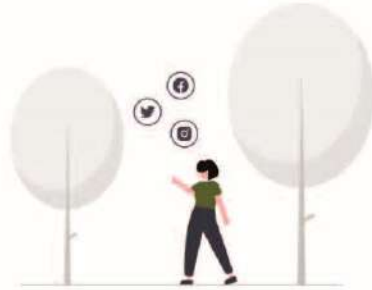
5 Dialogue with the involved actors to reach a consensus on the process



6 Creation of partnerships through stewardship agreements



7 Implementation of specific conservation actions



8 Communication and awareness of the actions and their results



9 Regular monitoring of the actions, maintenance and review of its effectiveness

BENEFITS FOR THE PRIVATE OWNER

- ▶ Regular agronomic advice
- ▶ Get funding for specific needs
- ▶ Free training courses
- ▶ Inclusion in research projects
- ▶ Communication support
- ▶ Inclusion in global projects for the organisation
- ▶ Income derived from the sale of products in our organic shop and restaurant

BENEFITS FOR THE PRIVATE OWNER

- ▶ Regular agronomic advice
- ▶ Get funding for specific needs
- ▶ Free training courses
- ▶ Inclusion in research projects
- ▶ Communication support
- ▶ Inclusion in global projects for the organisation
- ▶ Income derived from the sale of products in our organic shop and restaurant

BENEFITS FOR THE ORGANISATION

- ▶ Fulfilling our mission: preserve the nature



SUCCESSFUL CASES

Agrarian Stewardship: Maria Riera

Traditional olive groves

PRIVATE
OWNERSHIP

WHAT DO WE
CONSERVE?

Organic farming with special focus in
High-Nature Value Farming

HOW?

- Improvement of non-productive areas of farms to boost productivity and biodiversity
- Creation of brands for their products

LEGAL
INSTRUMENT

Stewardship contract
(2008-present)



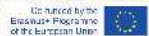
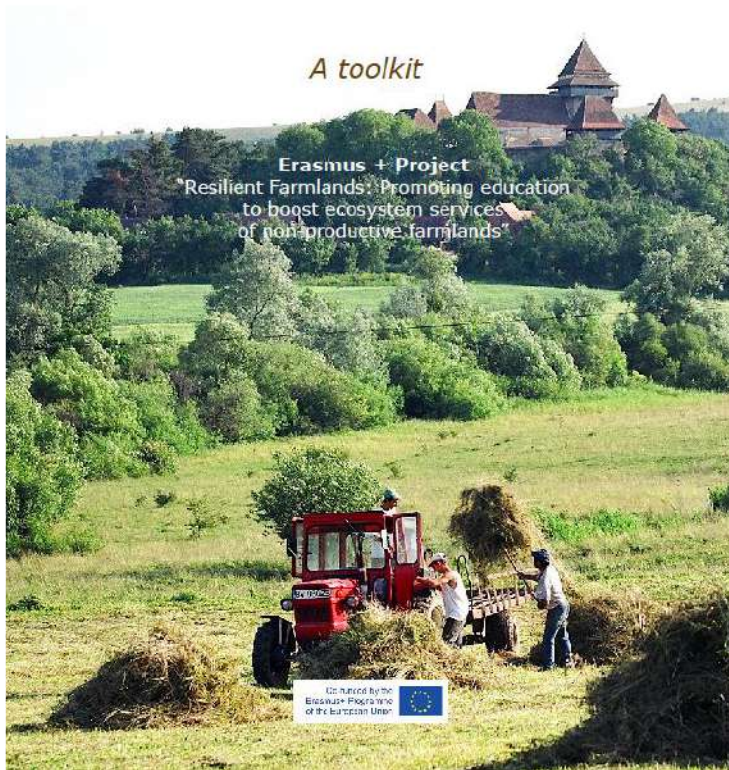


Promoting education to boost ecosystem services of farmlands

FARMING BENEFITS OF NATURE CONSERVATION

A toolkit

Erasmus + Project
"Resilient Farmlands: Promoting education
to boost ecosystem services
of non-productive farmlands"



Agrarian Stewardship: Can Ramilans

Traditional olive groves

PRIVATE
OWNERSHIP

WHAT DO WE
CONSERVE?

Organic farming with special focus in
High-Nature Value Farming

HOW?

- Implementation of more resilient agricultural systems
- Enhance of biodiversity

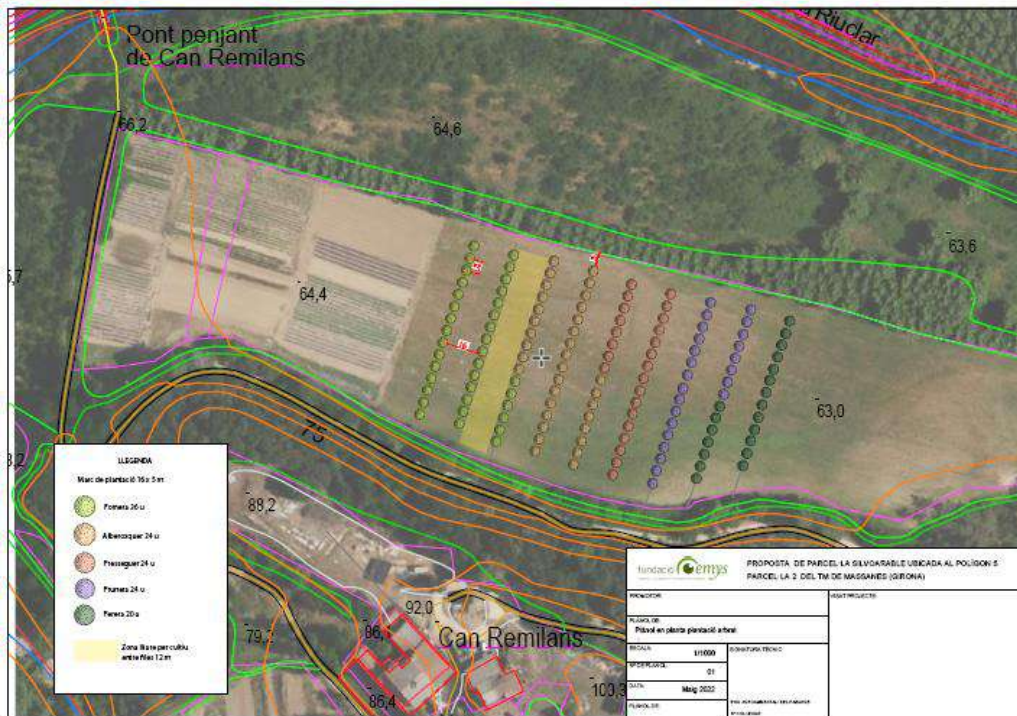
LEGAL
INSTRUMENT

Stewardship contract
(2017-present)





agro
for adapt



FACILITATORS

**NATURE PRESERVATION ALIGNED
FARMERS**

**XARXA PER LA CONSERVACIÓ DE LA
NATURA**

**RECURRING SUBSIDIES FOR LAND
STEWARDSHIP PROJECTS, OR FOR
PROXIMITY SELLING**

**NON-LUCRATIVE ORGANISATION
CHANNELING FUNDS AND
RESOURCES, AND HELPING WITH
BUROCRACY**

OBSTACLES

**PUBLIC ADMINISTRATION AND ITS
BUROCRACY**

**LACK OF STRUCTURAL FUNDING FOR
RECURRENT ADVISING FOR FARMERS**

THANK YOU!

CONTACT

Ivette Casadevall Cufí

Director

ivette@fundacioemys.org

972 16 49 57